

PGMS Hybrid-Getting Around

...

Entry Points

PGMS will use 6 separate entry points for students to get to their classes

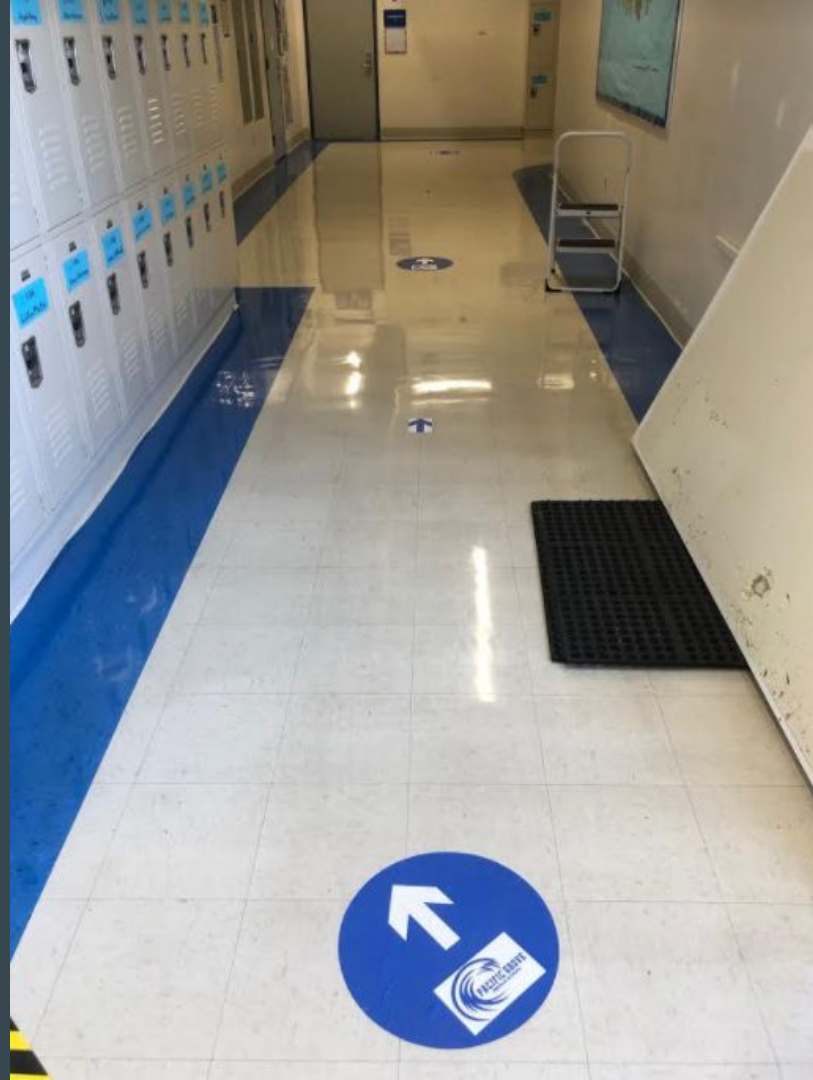
These entry points will allow students to use the door closest to their next class

Entry Points

Between each class, students will follow the one way pathways to the entry point closest to their next class

These pathways will be used both inside the building and outside













ENTRANCE

Gym

Mr. Dorey

Ms. Pettas




ENTRANCE
Gym







ENTRANCE ROOMS

10 - Tulley

11 & 13 - Goulet

12 Wheeler

12 Hurst

Music



ENTRANCE
ROOMS
10, 11, 12, 13,
Music, Auditorium



LIFT

THIS LIFT SHALL NOT
BE USED TO TRANSPORT
MATERIALS OR EQUIPMENT
LIFT CAPACITY:
TEL. *
IN CASE OF EMERGENCY

NOTICE
ALL VISITORS
MUST REGISTER
AT OFFICE

HOURS

OFFICE HOURS
7:30 A.M. - 4:00 P.M.

FOR VISITORS ONLY
PLEASE USE THE FRONT
ENTRANCE UNLESS
OTHERWISE NOTIFIED

NO PARKING
EXCEPT IN DESIGNATED
AREAS ONLY
SEE SIGNAGE



ENTRANCE
ROOMS
40, 41, 42, 43
Health Administration

LIFT
KIDNEY
HEALTH ADMINISTRATION





ENTRANCE ROOMS

25 - Fort

26 - Costales

27 - Hooper

28 - Mills

29 - Mountain



ENTRANCE

ROOMS

25, 26, 27, 28, 29

NOTICE
ALL VISITORS
MUST REGISTER
AT OFFICE

HOURS
OFFICE HOURS
7:30 A.M. - 4:00 P.M.

NOTICE
School Closes
at 4 p.m.
No Unauthorized
Admission
After Hours






ENTRANCE
ROOMS
25, 26, 27, 28, 29

NOTICE
ALL VISITORS
MUST REGISTER
AT OFFICE

PHONE
312-231-1111





ENTRANCE ROOMS

- 1 - Milligan**
- 3 - Tuinenga**
- 4 - McBride**
- 5 - Enterline**
- 6 - Rosen**
- 7 - Foster**





ENTRANCE

ROOMS

1, 3, 4, 5, 6, 7



PARENTS AND VISITORS
MUST USE THE FRONT
ENTRANCE LOCATED ON
FOREST AVENUE AND





ENTRANCE ROOMS

31 - Woodshop

32 - Rookstool

33 - Parsons

36 - Kong

37 - Mahr

38 - Torres

39 - Susan Gaul



ENTRANCE

ROOMS

**31, 32, 33, 36, 37,
38, 39**





ENTRANCE ROOMS

21 - Computer Lab

22 - Matlow

23 - Pam Gaul

**24 - Gamble
Library**

**PGMS Offices
are closed to
walk-in Appointments.**

**Please Call
(831) 646-6568**

**to schedule an
appointment.**



ENTRANCE

**ROOMS
21, 22, 23, 24,
Library**

DROP

DROP BOX



PACIFIC GROVE MIDDLE

BEN RANGER
SCHOOL OF THE FUTURE

SCHOOL OF THE FUTURE

NOTICE
SCHOOL OF THE FUTURE